



Long Pine Creek Watershed Improvement Project

Sand Draw Creek—Site SD 14

The Middle Niobrara Natural Resources District (MNNRD) is developing a stream restoration demonstration project on Sand Draw Creek, an important tributary to Long Pine Creek. The MNNRD intends to work with multiple partners and programs in order to address the interrelated problems facing the watershed. This project is located at Site SD-14, which was identified due to severe levels of incision, stream bed degradation, bank erosion, and the threat to the entire stream network.

Background

A public planning effort was completed in 2016 with the development of the Long Pine Creek Watershed Plan and the detailed Sand Draw Creek Stream Restoration Plan. The watershed is facing threats from stream erosion, high levels of *E. coli* bacteria, and other nonpoint source pollution. The plans identify a strategy to address these issues through voluntary efforts with willing property owners using both in-stream projects and agricultural best management practices (BMPs).

Existing Site SD 14



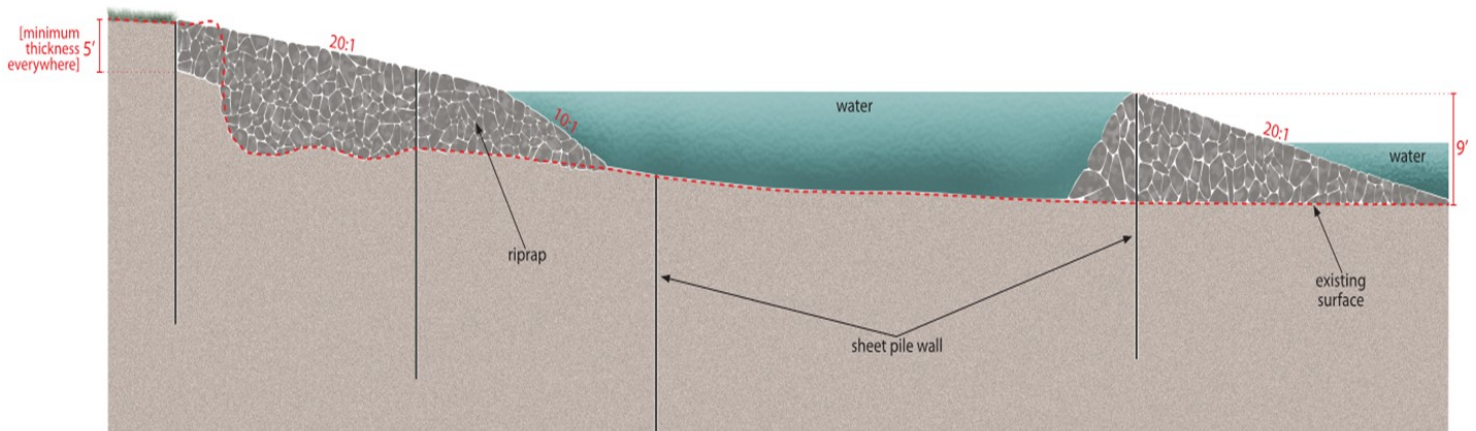
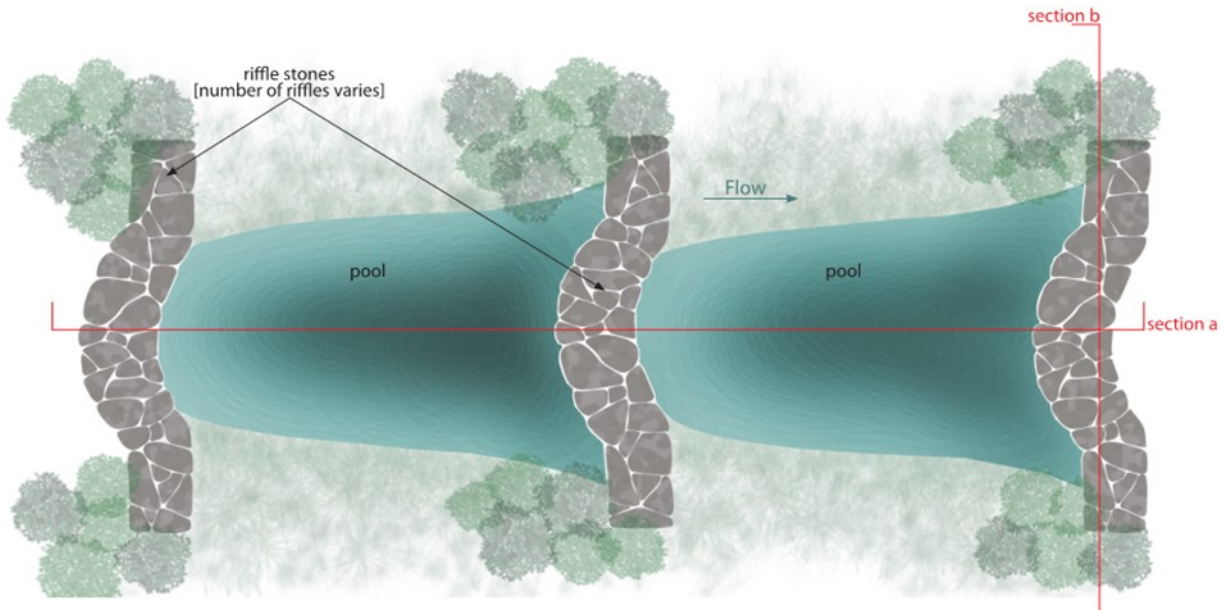
Project Goals

- ◆ Improve water quality
- ◆ Reduce streambank erosion and stream bottom downcutting
- ◆ Enhance aquatic habitat
- ◆ Protect upstream infrastructure
- ◆ Provide critical access across the stream for fire fighters and the landowner

Sand Draw Creek

Site SD 14

Conceptual Design: Engineered Rock Riffles



The project has received partial funding from the Nebraska Department of Environmental Quality (NDEQ) and the Nebraska Environmental Trust (NET) for design and construction. The MNNRD has hired JEO Consulting Group to assist with this project.

Contact Information

Mike Murphy

General Manager

Middle Niobrara NRD

402.376.3241

mjmurphy@qwestoffice.net

