



Sand & Soapweed

MIDDLE NIOBRARA NRD

Board of Directors:

Back Row: Dean Jochem, Greg Wilke (Chairman), Justin Hammond, & Len Danielski (Vice-Chairman)
 Front Row: Marty Graff, Cheryl Lovejoy (Secretary/Treasurer), & Mark Johnson

Staff:

Mike Murphy (General Manager), Zachery Peterson (Assistant/Office Manager), Tim Storm (Water Programs Supervisor), Dana Krueger (Natural Resources Supervisor), Chandler Schmidt (Watershed Coordinator), Kyle Temple (Natural Resources Technician), Wendy Tillman (Administrative Assistant) and Samuel Wilton (Intern)

~For the latest updates catch the NRD Moment on KVSH 940~



NSWCP Cost Share

- **1st Sign up deadline was due 6/21/19**
- Trees 50% up to \$4,000
- Planned Grazing 60% up to \$5,000
- Miscellaneous practices 60% up to \$5,000
- **2019-2020 Cost share funds are all allocated**
- **Reminder for 2020-21: Signup is in MAY!!**

Water Quality Cost Share

- **Sign up Nov 1st - Dec 31st**
- Surge Values
- Low Pressure Nozzles
- Converting Siphon Tubes to Gated Pipes 50% up to \$2,500
- Soil Moisture Sensors 50% up to \$1,000

Woody Biomass Utilization

- Wood Chip Creation
- Wood Chip Applications
- Composting

Conservation Tree Planting

- Time to start thinking about what trees you want for Spring 2020

PONDEROSA PINE REFORESTATION TREES AVAILABLE AGAIN IN 2020

The Middle Niobrara NRD and the Nebraska Forest Service are again offering cost-share assistance in 2020 to plant Ponderosa Pine seedlings in

areas burned in past wildfires. If you are interested, and willing to plant at least 1,200 trees on your property, the cost-share would cover 90% of the costs for the seedling and the planting.

Anyone is available to sign up, however, we would like to give new cooperators first chance at the available seedling pool. To learn more about this project please contact the MNDRD office @ 402-376-3241, or Rich Woollen with the NE. Forest Service @ 308-728-3221.

Grants:



319: Long Pine Creek Watershed Phase I
 - \$97,500
 - Nonpoint Source Water Quality Grant



John Deere 544 GTC Payloader
 \$20,000



Woody Biomass Utilization Compost Tractor
 \$192,000
Long Pine Creek Watershed Phase I
 \$250,000
Long Pine Creek Watershed Phase II
 \$451,530

Tree Program: 2019

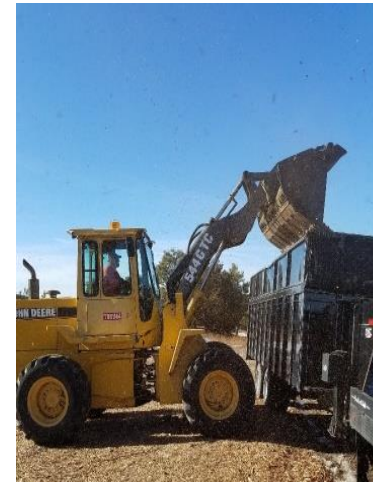
To encourage tree planting, the MNNRD provides low-cost tree and shrub seedlings to landowners. Cost share assistance, project design, weed barrier, drip irrigation and planting services are all available. Trees are planted throughout the district for protecting homesteads and livestock from the sun and wind, reducing soil erosion and atmospheric carbon dioxide, flood control, wildlife habitat, aesthetic value, noise reduction and as a “living snow fence”. This year 11,762 trees were planted, and 55,560 feet of fabric weed barrier was installed by the MNNRD crew.



Woody Biomass Utilization

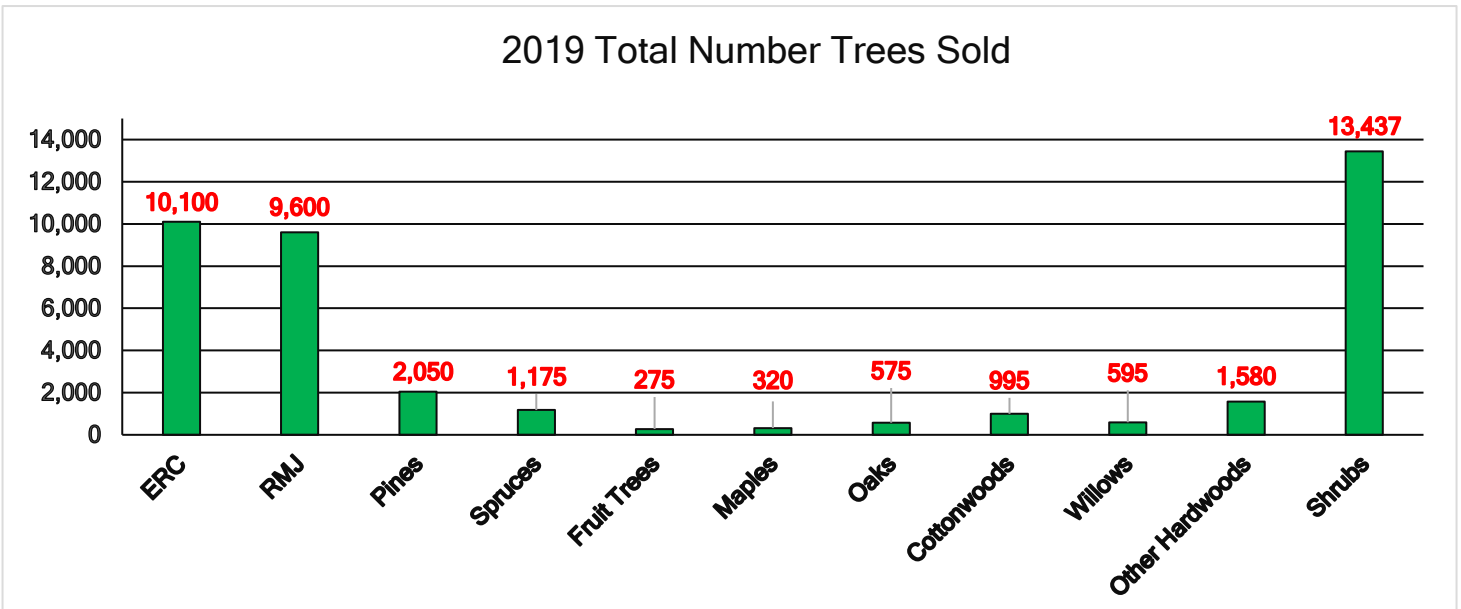
The MNNRD in conjunction with the University of Nebraska and 5 other NRD's have initiated the first year of the Waste to Worth research project. This project will study the agronomic, economic, environmental and soil health benefits from applications of wood chip and animal manure to research plots on cooperating producers' fields. The MNNRD produced and hauled cedar chips to 2 of the 6 research sites and spread the manure and wood chips on plots located within the MNNRD district. We are excited to see and document the changes in soil health and productivity of these plots.

The MNNRD was also awarded two grants to purchase equipment for use with the woody biomass utilization program. The Nebraska Recycling Council, funded through the Nebraska Environmental Trust (NET), awarded a grant to purchase a used John Deere 544GTC Payloader. Additionally, NET awarded a grant to allow the purchase of a Case 210 CVT tractor to operate the districts compost turner and manure spreader. Both pieces of equipment will allow them MNNRD to expand its woody biomass program into the composting realm. Composting is scheduled to begin this fall with a cooperating producer. Three trials will be implemented utilizing wood chips and manure in different mixture ratios. Evaluation of the success of each trial will be made for future composting efforts.

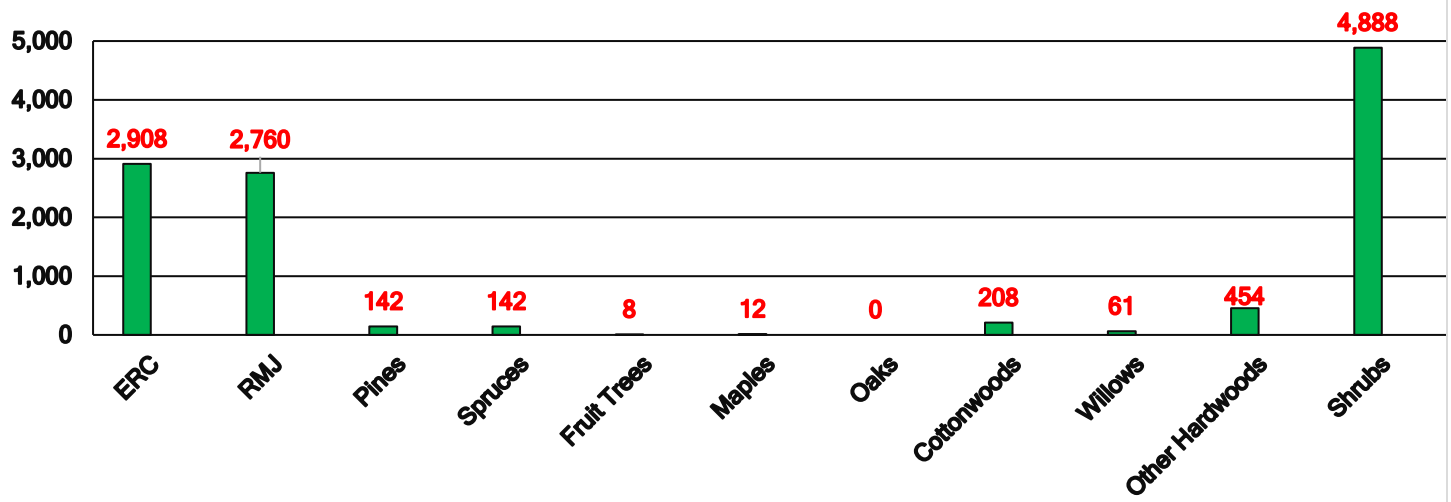




2019 Total Number Trees Sold



2019 Trees Planted by MNNRD



Long Pine Creek Watershed

The MNNRD and JEO Consultants are addressing threats to water quality, streambed channel, aquatic habitat and infrastructure within the Long Pine Creek Watershed (LPCW) by implementing Best Management Practices (BMP) within the LPCW and an In-Stream Structure on Sand Draw Creek. The watershed, approximately 332,000 acres primarily in Brown County, is mostly irrigated farming and rangeland within the Ainsworth and Long Pine communities. Grants from Nebraska Department of Environmental Quality and Nebraska Environmental Trust are helping fund the BMP's and construction of the structure on Sand Draw Creek. An application for an NRCS Watershed Work Plan (EA) in the LPCW through the WFPO Program was submitted and approved to obtain additional funding. The hiring of a consultant and the two-year planning phase will begin shortly looking at resource management concerns through watershed protection, water agricultural management, and public fish and wildlife.

